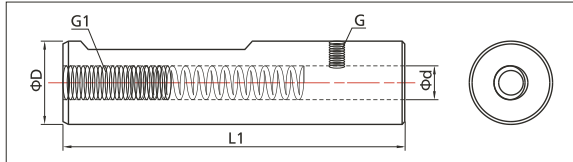
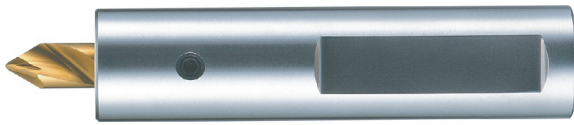




Scribing tool



STH

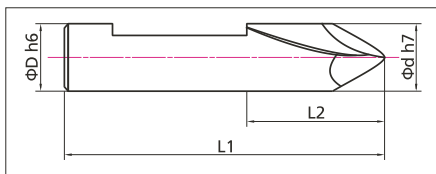


- ▶ Interchangeable carbide scribing drill mounted in the holder
- ▶ Rigid heat-treated tool steel holder
- ▶ Designed with spring system to retract drill for uneven surface.
- ▶ Extra function to use chamfer milling for hole edge

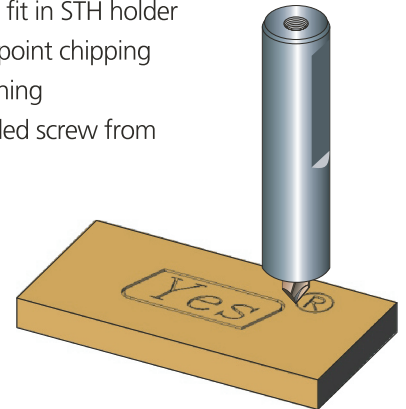
CODE No.	D(mm)	d(mm)	L1	G	G1
STH	20	8	120	M6	M8
STH-Spring	6		40		



SD



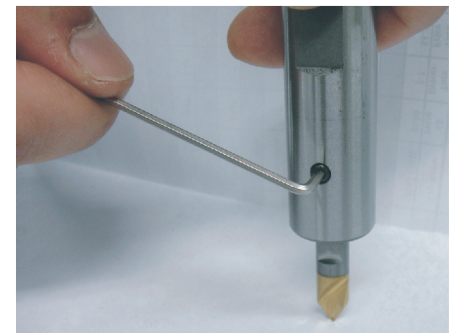
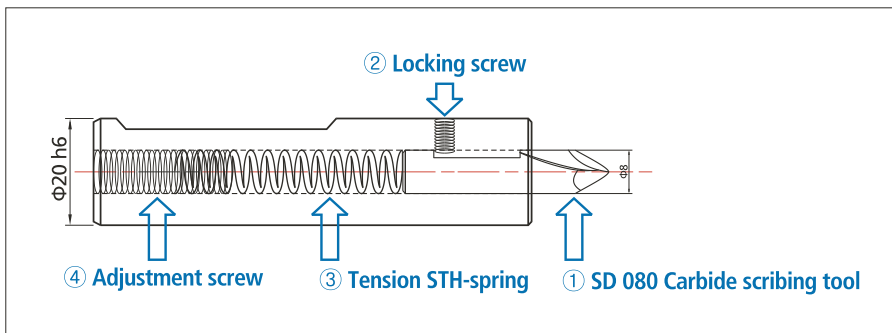
- ▶ TiN coated 90 degree drill point with dual angle for stable scribing
- ▶ Carbide flattened shank drill to fit in STH holder
- ▶ Dual angle point to prevent point chipping
- ▶ Locking by side screws fastening
- ▶ Adjustable tension by threaded screw from holder end



CODE No.	D(mm)	d(mm)	L1	L2
SD 080 TiN	8	8	37	13

How to assemble scribing tool

- Push ① SD 080, Scribing tool into tool body until hiding flattened shank completely
- Lock ② Locking screw completely.
- Insert ③ Tension STH-spring inside of tool body
- Turn ④ Adjustment screw right-hand direction and push into the holder-end.
- Finally, loose ② Locking screw by 45° left-hand direction (about 1/8 turn) so that spring's tension can be performed.



How to dismantle scribing tool

- Remove ④ Adjustment screw by left-hand direction.
- Take out ③ Tension STH-spring from tool body.
- Loose ② Locking screw.
- Take out ① SD 080 Scribing tool from tool body.

Warning ! : Be sure to locate scribing drill head lower during disassembly for safety, while tool body-end is upper position(See above photo).