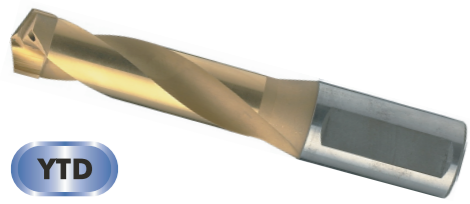
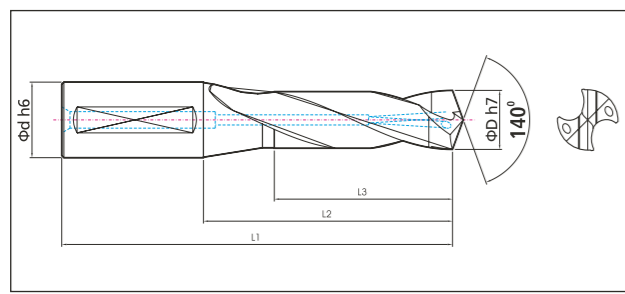


Carbide Tipped Drill, Metric



YTD



Model : YTD

- ▶ Carbide Brazed Tipped drill, HB shank, Internal coolant hole.
- ▶ 140° self-centering point for accurate hole positioning. Regular helix angle : 25°.
- ▶ Drill body consists of heat-treated tool steel and cutting edge is brazed with carbide tip.

Carbide substrate:

- ▶ Ultra-fine Micro Grain, TiN & TiAlN coated.

Application

- ▶ To perform heavy drilling operation and ideal for high productivity.
- ▶ Specially designed for powerful machine. Effective cutting depth 3xDia.
- ▶ Broad range application from general to tough material.

Code No.	D	d	L1	L2	L3
YTD 135	13.5	16.0	115	67	48
YTD 136	13.6				
YTD 137	13.7				
YTD 138	13.8				
YTD 139	13.9				
YTD 140	14.0				
YTD 141	14.1				
YTD 142	14.2				
YTD 143	14.3				
YTD 144	14.4				
YTD 145	14.5	20.0	130	80	59
YTD 146	14.6				
YTD 147	14.7				
YTD 148	14.8				
YTD 149	14.9				
YTD 150	15.0				
YTD 151	15.1				
YTD 152	15.2				
YTD 153	15.3				
YTD 154	15.4				
YTD 155	15.5	25.0	155	99	73
YTD 156	15.6				
YTD 157	15.7				
YTD 158	15.8				
YTD 159	15.9				
YTD 160	16.0				
YTD 161	16.1				
YTD 162	16.2				
YTD 163	16.3				
YTD 164	16.4				
YTD 165	16.5				

Code No.	D	d	L1	L2	L3
YTD 166	16.6	20.0	140	90	66
YTD 167	16.7				
YTD 168	16.8				
YTD 169	16.9				
YTD 170	17.0				
YTD 171	17.1				
YTD 172	17.2				
YTD 173	17.3				
YTD 174	17.4				
YTD 175	17.5				
YTD 176	17.6	25.0	160	104	76
YTD 177	17.7				
YTD 178	17.8				
YTD 179	17.9				
YTD 180	18.0				
YTD 181	18.1				
YTD 182	18.2				
YTD 183	18.3				
YTD 184	18.4				
YTD 185	18.5				
YTD 186	18.6	32.0	175	115	83
YTD 187	18.7				
YTD 188	18.8				
YTD 189	18.9				
YTD 190	19.0				
YTD 191	19.1				
YTD 192	19.2				
YTD 193	19.3				
YTD 194	19.4				
YTD 195	19.5				
YTD 196	19.6				

Code No.	D	d	L1	L2	L3
YTD 197	19.7	25.0	185	125	92
YTD 198	19.8				
YTD 199	19.9				
YTD 200	20.0				
YTD 201	20.1				
YTD 202	20.2				
YTD 203	20.3				
YTD 204	20.4				
YTD 205	20.5				
YTD 206	20.6				
YTD 207	20.7	32.0	185	125	92
YTD 208	20.8				
YTD 209	20.9				
YTD 210	21.0				
YTD 211	21.1				
YTD 212	21.2				
YTD 213	21.3				
YTD 214	21.4				
YTD 215	21.5				
YTD 216	21.6				
YTD 217	21.7	40.0	210	140	98
YTD 218	21.8				
YTD 219	21.9				
YTD 220	22.0				
YTD 221	22.1				
YTD 222	22.2				
YTD 223	22.3				
YTD 224	22.4				
YTD 225	22.5				
YTD 226	22.6				
YTD 227	22.7				

Continued ▶▶

37
36.0°

Carbide Tipped Drill, Metric

Indexable, Coolant Drill Series

Indexable, Coolant Drill Series

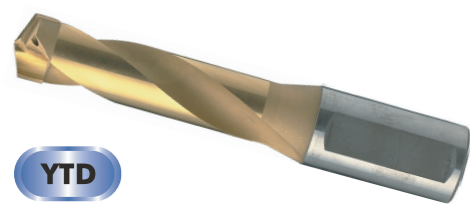
Code No.	D	d	L1	L2	L3
YTD 228	22.8	25.0	160	104	76
YTD 229	22.9				
YTD 230	23.0				
YTD 231	23.1				
YTD 232	23.2				
YTD 233	23.3				
YTD 234	23.4				
YTD 235	23.5				
YTD 236	23.6				
YTD 237	23.7				
YTD 238	23.8	32.0	170	110	79
YTD 239	23.9				
YTD 240	24.0				
YTD 241	24.1				
YTD 242	24.2				
YTD 243	24.3				
YTD 244	24.4				
YTD 245	24.5				
YTD 246	24.6				
YTD 247	24.7				
YTD 248	24.8	40.0	210	140	98
YTD 249	24.9				
YTD 250	25.0				
YTD 251	25.1				
YTD 252	25.2				
YTD 253	25.3				
YTD 254	25.4				
YTD 255	25.5				
YTD 256	25.6				
YTD 257	25.7				
YTD 258	25.8	40.0	220	150	104
YTD 259	25.9				
YTD 260	26.0				
YTD 261	26.1				
YTD 262	26.2				
YTD 263	26.3				
YTD 264	26.4				
YTD 265	26.5				
YTD 266	26.6				
YTD 267	26.7				
YTD 268	26.8	40.0	230	160	113
YTD 269	26.9				
YTD 270	27.0				
YTD 271	27.1				
YTD 272	27.2				
YTD 273	27.3				
YTD 274	27.4				
YTD 275	27.5				
YTD 276	27.6				
YTD 277	27.7				
YTD 278	27.8	40.0	240	170	119
YTD 279	27.9				
YTD 280	28.0				
YTD 281	28.1				
YTD 282	28.2				
YTD 283	28.3				
YTD 284	28.4				
YTD 285	28.5				
YTD 286	28.6				
YTD 287	28.7				
YTD 288	28.8	40.0	250	180	122
YTD 289	28.9				
YTD 290	29.0				

Code No.	D	d	L1	L2	L3
YTD 291	29.1	32.0	185	125	92
YTD 292	29.2				
YTD 293	29.3				
YTD 294	29.4				
YTD 295	29.5				
YTD 296	29.6				
YTD 297	29.7				
YTD 298	29.8				
YTD 299	29.9				
YTD 300	30.0				
YTD 301	30.1	40.0	210	140	98
YTD 302	30.2				
YTD 303	30.3				
YTD 304	30.4				
YTD 305	30.5				
YTD 306	30.6				
YTD 307	30.7				
YTD 308	30.8				
YTD 309	30.9				
YTD 310	31.0				
YTD 311	31.1	40.0	220	150	104
YTD 312	31.2				
YTD 313	31.3				
YTD 314	31.4				
YTD 315	31.5				
YTD 316	31.6				
YTD 317	31.7				
YTD 318	31.8				
YTD 319	31.9				
YTD 320	32.0				
YTD 321	32.1	40.0	230	160	113
YTD 322	32.2				
YTD 323	32.3				
YTD 324	32.4				
YTD 325	32.5				
YTD 326	32.6				
YTD 327	32.7				
YTD 328	32.8				
YTD 329	32.9				
YTD 330	33.0				
YTD 331	33.1	40.0	240	170	119
YTD 332	33.2				
YTD 333	33.3				
YTD 334	33.4				
YTD 335	33.5				
YTD 336	33.6				
YTD 337	33.7				
YTD 338	33.8				
YTD 339	33.9				
YTD 340	34.0				
YTD 341	34.1	40.0	250	180	122
YTD 342	34.2				
YTD 343	34.3				
YTD 344	34.4				
YTD 345	34.5				
YTD 346	34.6				
YTD 347	34.7				
YTD 348	34.8				
YTD 349	34.9				
YTD 350	35.0				
YTD 351	35.1				
YTD 352	35.2				
YTD 353	35.3				

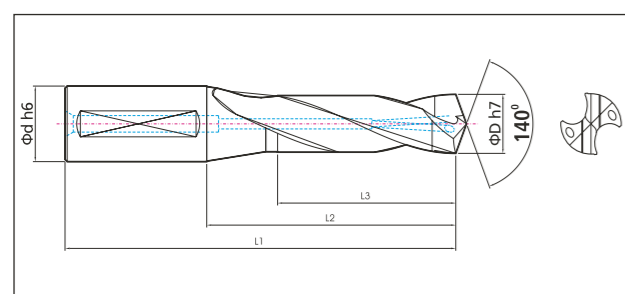
Code No.	D	d	L1	L2	L3
YTD 354	35.4	40.0	240	170	119
YTD 355	35.5				
YTD 356	35.6				
YTD 357	35.7				
YTD 358	35.8				
YTD 359	35.9				
YTD 360	36.0				
YTD 361	36.1				
YTD 362	36.2				
YTD 363	36.3				
YTD 364	36.4	40.0	250	180	122
YTD 365	36.5				
YTD 366	36.6				
YTD 367	36.7				
YTD 368	36.8				
YTD 369	36.9				
YTD 370	37.0				
YTD 371	37.1				
YTD 372	37.2				
YTD 373	37.3				
YTD 374	37.4	40.0	260	190	130
YTD 375	37.5				
YTD 376	37.6				
YTD 377	37.7				
YTD 378	37.8				
YTD 379	37.9				
YTD 380	38.0				
YTD 381	38.1				
YTD 382	38.2				
YTD 383	38.3				
YTD 384	38.4	40.0	270	200	140
YTD 385	38.5				
YTD 386	38.6				
YTD 387	38.7				
YTD 388	38.8				
YTD 389	38.9				
YTD 390	39.0				
YTD 391	39.1				
YTD 392	39.2				
YTD 393	39.3				
YTD 394	39.4	40.0	280	210	150
YTD 395	39.5				
YTD 396	39.6				
YTD 397	39.7				
YTD 398	39.8				
YTD 399	39.9				
YTD 400	40.0				
YTD 401	40.1				
YTD 402	40.2				
YTD 403	40.3				
YTD 404	40.4	40.0	290	220	160
YTD 405	40.5				
YTD 406	40.6				
YTD 407	40.7				
YTD 408	40.8				
YTD 409	40.9				
YTD 410	41.0				
YTD 411	41.1				
YTD 412	41.2				
YTD 413	41.3				
YTD 414	41.4	40.0	300	230	170
YTD 415	41.5				

38
36.0°

Carbide Tipped Drill, Inch



YTD



* Inch YTD available upon request only.

Model : YTD

- ▶ Carbide Brazed Tipped drill, HB shank, Internal coolant hole.
- ▶ 140° self-centering point for accurate hole positioning. Regular helix angle : 25°.
- ▶ Drill body consists of heat-treated tool steel and cutting edge is brazed with carbide tip.

Carbide substrate:

- ▶ Ultra-fine Micro Grain, TiN & TiAlN coated.

Application

- ▶ To perform heavy drilling operation and ideal for high productivity.
- ▶ Specially designed for powerful machine. Effective cutting depth 3xDia.
- ▶ Broad range application from general to tough material.

Indexable, Coolant Drill Series

Indexable, Coolant Drill Series

Code No.	D	d	L1	L2	L3
YTD .5310	0.531	0.625	4.52	2.63	1.88
YTD .5460	0.546				
YTD .5620	0.562				
YTD .5780	0.578				
YTD .5930	0.593	0.750	5.11	3.14	2.32
YTD .6090	0.609				
YTD .6250	0.625				
YTD .6400	0.640				
YTD .6560	0.656	1.000	5.51	3.54	2.59
YTD .6710	0.671				
YTD .6870	0.687				
YTD .7030	0.703				
YTD .7180	0.718	1.000	6.10	3.89	2.87
YTD .7340	0.734				
YTD .7500	0.750				
YTD .7650	0.765				
YTD .7810	0.781				
YTD .7960	0.796				
YTD .8120	0.812				
YTD .8280	0.828				
YTD .8430	0.843				
YTD .8590	0.859				
YTD .8750	0.875	1.500	6.29	4.09	2.99
YTD .8900	0.890				
YTD .9060	0.906				
YTD .9210	0.921				

Code No.	D	d	L1	L2	L3
YTD .9370	0.937	1.250	6.69	4.33	3.11
YTD .9530	0.953				
YTD .9680	0.968				
YTD .9840	0.984				
YTD1 .0000	1.000	1.250	6.88	4.52	3.26
YTD1 .0150	1.015				
YTD1 .0310	1.031				
YTD1 .0460	1.046				
YTD1 .0620	1.062	1.500	7.28	4.92	3.62
YTD1 .0780	1.078				
YTD1 .0930	1.093				
YTD1 .1090	1.109				
YTD1 .1250	1.125	1.500	8.26		